

SWE25UF Mini Excavator

Operating Weight: 5,842 LBS (2,650 KG)

Gross Power: 20 HP (1.267 kW)

Dig Depth: 9' 4" (3 m)



Turn
over for full
specifications!

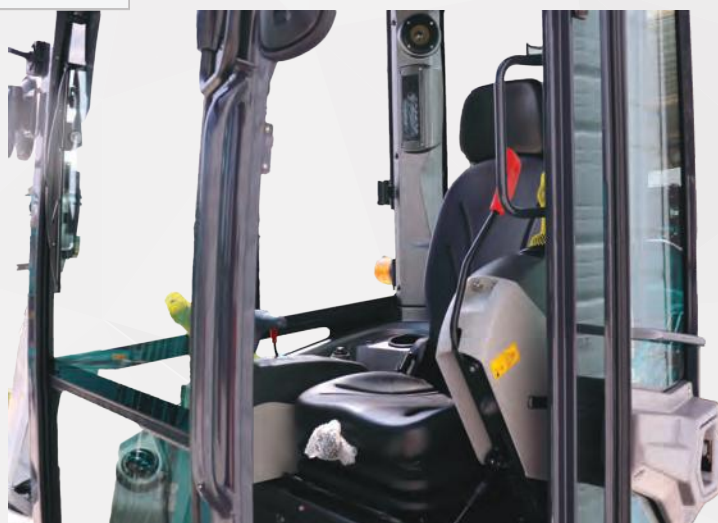
Technical Specifications and Product Highlights

Machine Weight		5,842 lbs	2,650 kg	
Machine Dimensions	Overall Length	14'	4.26 m	
	Overall Height	8'	2.45 m	
	Overall Width	4' 11"	1.5 m	
	Ground Clearance	1'	310 mm	
	Tail Swing Radius	2' 6"	765 mm	
Engine	Brand	YANMAR		
	Model	3TNV80F-SPSU		
	Displacement	.335 Gal	1.267 L	
	Output	20 HP	14.914 kW	
	Max Speed (High/Low)	2.7/1.6 mph	4.2/2.6 kph	
	Working Ranges	Max Cutting Height	14' 4"	4.345 m
Max Loading Height		9' 11"	3 m	
Max Digging Depth		9' 4"	2.84 m	
Max Vertical Digging Depth		8' 6"	2.58	
Max Digging Reach		15' 8"	4.775 m	
Boom Swing Angle (Left/Right)		66/50 degrees		
Front Swing Radius		6' 6"	2 m	
Max Digging Force (Arm)		3.1 kip	14 kN	
Max Digging Force (Bucket)		5.4kip	24 kN	
Swing Speed		9.5 rpm		
Ground Pressure		3.63 psi	25 kpa	
Tracks		Track Width	11.8"	300 mm
		Track Length	6' 7"	1.990 m
	Track Type	Rubber Crawler		
	Gradeability	30 Degrees		
Hydraulics	Brand	KYB		
	Type	Variable Plunger Pump		
	Total Flow	22 gal/min	83.3 L/min	
Fuel and Hydraulics Tanks	Fuel Tank Capacity	6.9 Gal	26 L	
	Hydraulic Oil Capacity	6.3 Gal	24 L	

Zero-Tail Swing for increased maneuverability



YANMAR Engine with slide up access panel for maintenance



Enclosed cab offers removable windshield and sliding windows for airflow

Sunward USA Corp

Web: www.sunwardusa.com

Address: 2710 Geesling Rd, Denton TX 76208

Contact Info

Phone: (469)-353-6890

Email: info@sunwardusa.com

Model:

SWE25UF