

# HERCULES Introducing the All New Model Range of Wheel Loaders from 2020



# H668

## Power, Performance & Reliability



- **High Productivity**  
Load sensing hydraulic system provides consistent and precise blade movement
- **High Reliability**  
A-frame designed drawbar provides strength in all blade positions
- **Comfort**  
World Class industry control layout with low lever efforts for reduced operator fatigue

### HERCULES EQUIPMENT

28 Old Pacific Highway Yatala Queensland 4207 Australia

Ph: 07 3807 4333

[enquiries@bmesales.com.au](mailto:enquiries@bmesales.com.au)

[www.herculesloaders.com.au](http://www.herculesloaders.com.au)

A Division Of BME Sales



# Specifications

Items		668D	Items		668D
Main Specifications			<b>Engine</b>		
Rated Load	kg	6,000	Model		CAT Nominated Engine
Operating Weight with Standard Bucket	kg	20,117	Rated Power	kW	178
Bucket Capacity	m <sup>3</sup>	2.9-5.5	Rated Speed	r/min	2,200
Wheel Base	mm	3,350	Displacement	L	9.7
Overall Dimension	mm	8,541*3,092*3,458	Implement Hydraulic		
Max. Drawbar Force	KN	188	Implement System Type		Open Center
Breakout Force	KN	197	Boom Raise Time	s	5,33
Dump Clearance	mm	3,051	Hydraulic Cycle Time	s	9.85
B-Pin Height	mm	4,196	System Pressure Setting	Mpa	18
Transmission			Brake System		
Transmission Type		Countershaft, Powershift, EH Control	Service Brake		Dry&Caliper, Air to Oil Control
Transmission Gears		F4/R3	Parking Brake		Drum/Shoe
Torque Converter Type		Single Stage, 3 Elements	Steering System		
Maker & Type		160	System Type		Shared Flow
Forward I/Reverse I		6.3/6.3	Steering Pump Type		Gear Pump
Forward II/Reverse II		11/11	System Pressure Setting	Mpa	16
Forward III/Reverse III		19.6/19.6	Steering Angle (L/R)		38±1
Forward IV/Reverse IV		32/NA	Tires		
Axle			Size		23.5-25
Main Drive Type		Spiral Bevel Gear, Single Stage	Type		Bias
Final Drive Reduction Type		Planetary Type, Single Stage	Layer		20
Rear - Oscillating +/-		±11	Textured Type		L-3

## Serviceability

- Quick pressure test ports on hydraulic (SOS) and brake air lines make diagnose easier
- Large wing hood door make service easier, approach to air cleaner, fuel filter and oil filter
- Large thread design in articulation section make operator easier to approach
- Air tank with pressured air tap provide more convenient for service and maintenance



## Cummins Engine

- E-fan make fuel consumption better, 3 speeds auto-selection depend on coolant temperature
- 3 stages air cleaner with 93% efficiency pre-cleaner reduce earlier wearing, high efficiency fuel filter make engine work in good condition
- Caterpillar design damping mount reduce vibration failure. Four air valves delivers robust power



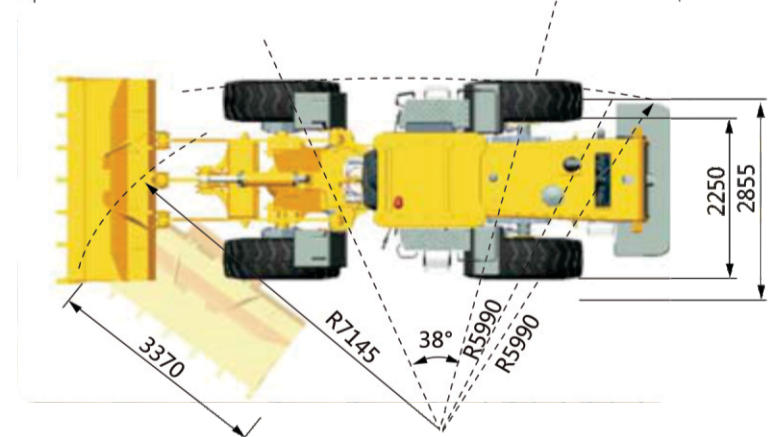
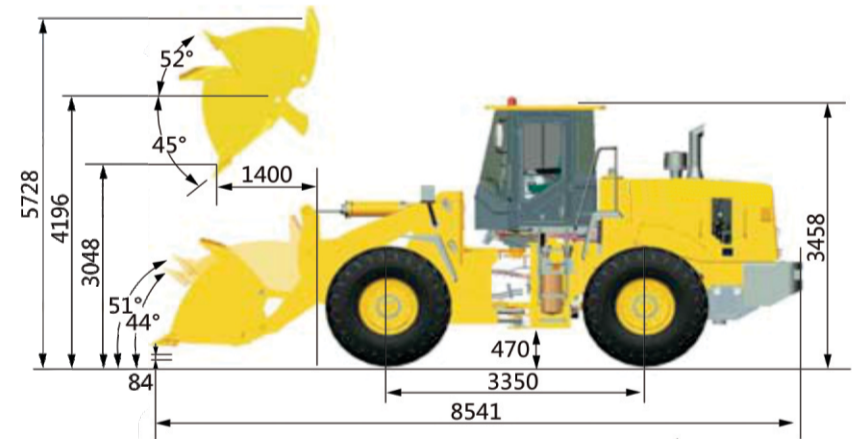
## Advanced Cooling System

- High performance aluminum cooling package suitable for most severity application
- Oil cooler and radiator parallel design can balance heat load inside and suitable for diversity applications
- Damping design reduces vibration failure



## Efficient Hydraulic System

- Two pumps flow sharing system deliver high productivity and fuel efficiency
- World class pump and Cat technology lines routing deliver better reliability
- Full hydraulic load sensing steering deliver easy operation and more comfortable



► Note: the above dimensions are based on the standard configuration.

# HERCULES EQUIPMENT

28 Old Pacific Highway Yatala Queensland 4207 Australia

Ph: 07 3807 4333

enquiries@bmesales.com.au

www.herculesloaders.com.au

A Division Of BME Sales

