

HERCULES Introducing the All New Model Range of Wheel Loaders from 2020

656D



Power, Performance & Reliability



■ High Productivity

Load sensing hydraulic system provides consistent and precise blade movement

■ High Reliability

A-frame designed drawbar provides strength in all blade positions

■ Comfort

World Class industry control layout with low lever efforts for reduced operator fatigue

HERCULES EQUIPMENT

28 Old Pacific Highway Yatala Queensland 4207 Australia

Ph: 07 3807 4333

enquiries@bmesales.com.au

www.herculesloaders.com.au

A Division Of BME Sales



Specifications

Items		656D	Items		656D
Main Specifications			Engine		
Rated Load	kg	5 000	Model		Cummins 6LT9.3
Operating Weight with Standard Bucket	kg	16 800	Rated Power	kW	162
Bucket Capacity	m ³	2.7-4.5	Rated Speed	r/min	2 000
Wheel Base	mm	3 300	Displacement	L	9.242
Overall Dimension	mm	8 279x2 963x3 457	Implement Hydraulic		
Operating Specifications			Implement System Type		
Breakout Force	kN	178	Boom Raise Time	s	5.13
Dump Clearance	mm	3 113	Hydraulic Cycle Time	s	9.3
Articulated Angle	°	38±1	System Pressure Setting	Mpa	18
Transmission			Brake System		
Transmission Type		Countershaft, power shift	Service Brake		Dry & caliper, air to oil control
Transmission Gears		F4/R4	Parking Brake		Drum type shoe brake, spring applied & oil released
Torque Converter Type		Single stage 3 elements	Steering System		
Maker & Type		TR200	System Type		Flow amplifying
Forward I/ Reverse I	km/h	7.8/7.8	Steering Pump Type		Piston pump
Forward II/ Reverse II	km/h	15/15	System Pressure Setting	Mpa	16
Forward III/ Reverse III	km/h	22/22	Steering Angle (L/R)	°	38±1
Forward IV/ Reverse IV	km/h	39/39	Tires		
Axle			Size		23.5-25
Main Drive Type		Spiral bevel gear, single stage	Type		Bias
Final Drive Reduction Type		Planetary type, single stage	Layer		16
Rear - Oscillating +/-	°	±11	Textured Type		L3/E3

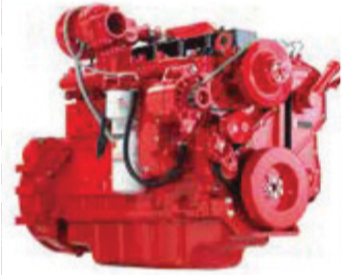
Serviceability

- Quick pressure test ports on hydraulic (SOS) and brake air lines make diagnose easier
- Large wing hood door make service easier, approach to air cleaner, fuel filters and oil filters
- Large thread design in articulation section make operator easier to approach
- Air tank with pressured air tap provide more convenience for service and maintenance



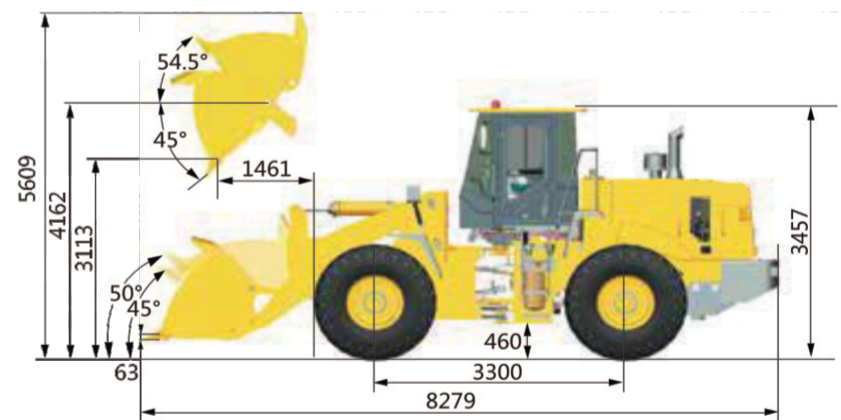
Cummins Engine

- Specially configured curve to optimize torque and power for higher productivity and better fuel efficiency
- Maximized fuel efficiency over the range of wheel loader operating duty cycles make fuel consumption better
- Large torque in Low engine speed, good reaction performance in low speed & good acceleration
- Radial seal air filter, easy for service



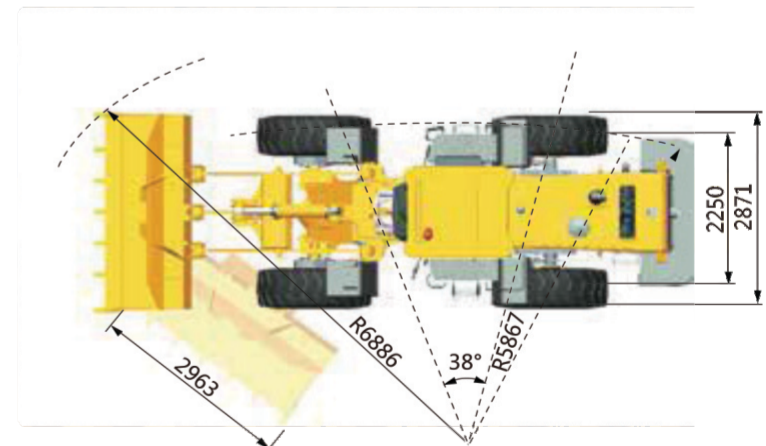
Advanced Cooling System

- High performance aluminum cooling package suitable for most severity applications
- Oil cooler and radiator parallel design can balance heat load inside and suitable diversity applications
- Damping design reduce vibration failure
- High ambient 50°C cooling package make machine reliability better



Efficient Hydraulic System

- Single load sensing system, high productivity and high fuel efficiency
- Piston pump, lower heat load contribution and provide more rim pull when hydraulic partial working
- Less hydraulic oil capacity required because provide flow depends on demand



► Note: the above dimensions are based on the standard configuration.

HERCULES EQUIPMENT

28 Old Pacific Highway Yatala Queensland 4207 Australia

Ph: 07 3807 4333

enquiries@bmesales.com.au

www.herculesloaders.com.au

A Division Of BME Sales

